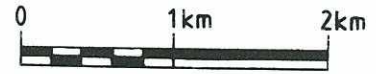
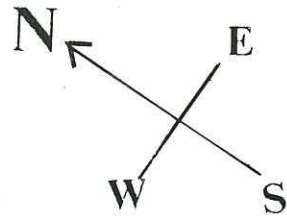
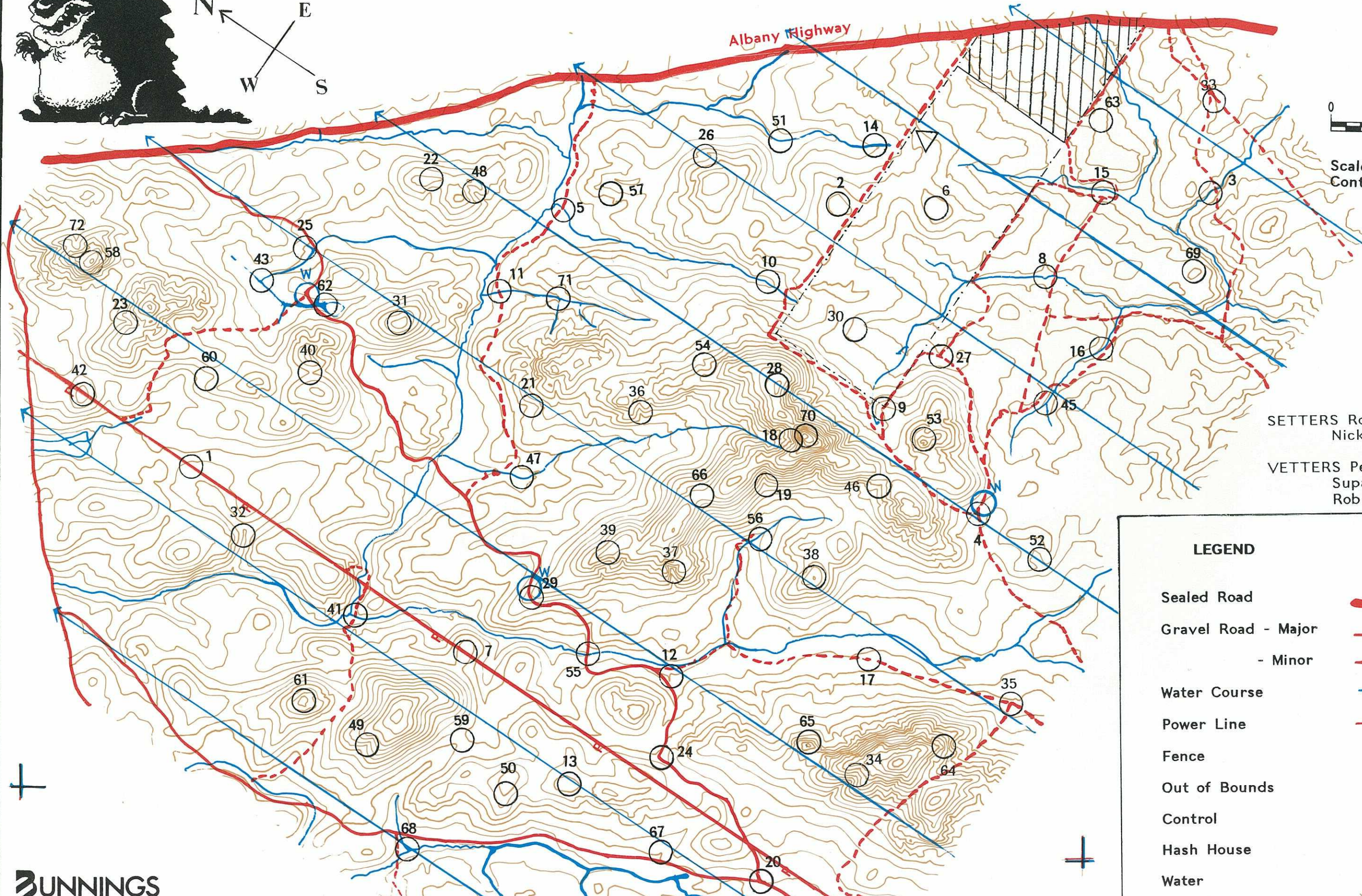


TROLLS' TORMENT

12 HOUR AUTUMN ROGAINE 1994



Scale 1:50,000
Contour interval 10m



SETTERS Rob Gates & Nicky Armstrong

VETTERS Peter Lurie, John Supanz, Ron Gordon, Rob & Nicky Sudmeyer

LEGEND

- Sealed Road
- Gravel Road - Major
- Minor
- Water Course
- Power Line
- Fence
- Out of Bounds
- Control
- Hash House
- Water
- Contours



This event is on land owned and managed by Bunnings Tree Farms, CALM and Mr Stan Paulls. Please respect the kindness extended to our sport.

This map compiled from contours and maps from DOLA

TROLLS' TORMENT

12 Hour Rogaine April 1994

Control Points	Description
1	20 Power pole 407, then 110m @ 245°
2	20 The summit
3	20 In the creek,
4	20 The track junction
5	20 On the track
6	20 The summit
7	30 Power pole 393 then 135m @ 50°
8	30 In the creek
9	30 A fence corner
10	30 In the creek
11	30 Creek, North of track crossing
12	30 In a watercourse
13	40 The summit
14	40 A well
15	40 A 100x50m rock surface North side
16	40 In the creek
17	40 On the track
18	40 Head of the gully
19	40 In the gully
20	40 Track junction then 120m @ 120°
21	40 A 75 x 30 m rock surface at head of the gully
22	40 The summit, Southern end
23	40 In the gully
24	40 A track junction
25	50 A 100 x 50 m rock surface
26	50 Head of the gully
27	50 The track junction, 150m @ 142°
28	50 The summit
29	50 A blazed tree
30	50 A dam
31	60 The summit
32	60 In the creek
33	60 A pine tree between the tracks
34	60 Small knoll at head of the gully
35	60 The track junction

Control Points	Description
36	60 In the gully
37	60 Head of the gully
38	60 The summit
39	60 Rocky area at head of the spur
40	60 On the saddle
41	60 A bridge
42	60 Power pole 414 then 80m @ 220°
43	70 The creek junction
45	70 The creek junction
46	70 In the gully
47	70 A creek junction
48	70 In the gully
49	80 In the gully
50	80 Top of the spur
51	80 Junction of two broad gullies
52	80 The gully
53	80 The summit
54	80 Head of the gully
55	80 A Troll bridge
56	80 A spring
57	80 A 200x100m rock surface, NW side
58	80 The summit
59	80 On a track on North side of the saddle
60	80 In the broad gully
61	90 The summit
62	90 Swamp Northern end
63	90 A 5x5m rock pile, 2m high
64	90 On the spur
65	90 The rocky knoll
66	90 On the saddle
67	100 The shallow gully
68	100 The creek junction
69	100 The summit
70	100 The summit
71	100 A creek junction
72	100 A creek junction at the head of the gully

